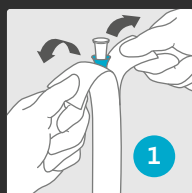
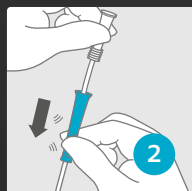


NEW
soft
catheter

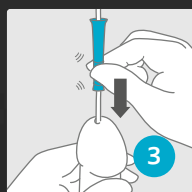
Introducing the new **SpeediCath[®] Soft** for men



1 Hold the packaging upright when opening




2 Release the insertion grip and pinch the wavy section



3 Use a stepwise pinch-and-release technique to insert

Help patients get off to a good start

For more detailed instructions, consult the 'instruction for use' document delivered with the products and watch this video guide on www.coloplast.to/SpeediCathSoft

 Before use, always consult the 'instructions for use' document delivered with the products.



The truth is:

The whole process should be quick¹⁻²

Convenience matters to users of intermittent catheters. That is why the new SpeediCath® Soft comes pre-lubricated, so it's instantly ready-to-use.



Fast preparation

When opening the packaging, SpeediCath Soft is instantly ready-to-use, as it is pre-lubricated with a unique hydrophilic coating for smooth insertion.

Soft catheter

SpeediCath Soft is easy to use the first time and every time.

Confident grip

The insertion grip is made from a soft, flexible material and designed to ensure a good, firm grip of the catheter. The grip makes it easy to insert the catheter without touching the tube or tip.



SpeediCath Soft - a straight tip catheter for men

Product code	Size	Catheters per box	Catheter length
27010	● 10 FR	30	13 in
27012	○ 12 FR	30	13 in
27014	● 14 FR	30	13 in
27016	● 16 FR	30	13 in

Request samples at
bladder.coloplastcare.us

1. Pascoe G, Clovis S. Evaluation of two coated catheters in intermittent self-catheterization. Br J Nurs 2001;10(5):325-9.

2. De Ridder DJ, Everaert K, Fernández LG, et al. Intermittent catheterisation with hydrophilic-coated catheters (SpeediCath®) reduces the risk of clinical urinary tract infection in spinal cord injured patients: a prospective randomised parallel comparative trial. Eur Urol 2005;48(6):991-5.

SpeediCath® Soft is indicated for use by patients with urine retention and patients with post void residual volume (PVR) due to neurogenic and non-neurogenic voiding dysfunction. The catheter is inserted into the urethra to reach the bladder allowing urine to drain. The product is for adult male patients only. SpeediCath catheters are available by prescription only. Patients performing self-catheterization should follow the advice of, and direct questions about use of the product to, their medical professional. Before using the device, carefully read the product labels and information accompanying the device including the instructions for use which contain additional safety information. The SpeediCath product is for single-use only; discard it after use. If you experience symptoms of a urinary tract infection, or are unable to pass the catheter into the bladder, contact your healthcare professional. The risk information provided here is not comprehensive. To learn more, talk to your healthcare provider. For further information, call Coloplast Corp. at 1-866-226-6362 and/or consult the company website at <http://www.coloplast.us>